

MARCH 27, 2022

## INSTRUCTIONS

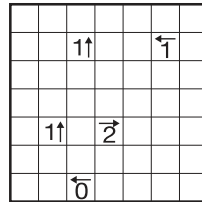
The goal of Yajilin is to both fill in black cells and draw a single, continuous loop through the remaining white cells, so that every cell of the grid is filled.

The numbered cells show how many black cells appear in the direction of the arrow, between the numbered cell and the edge of the puzzle. Black cells may not touch vertically or horizontally, but they may touch numbered cells.

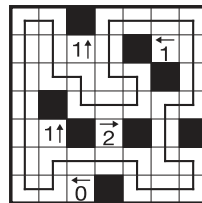
The loop must pass through the centers of the white cells in a single, continuous line that does not cross itself, branch off, pass through the same cell twice, or pass through a black or numbered cell.

A good way to begin is by filling in obvious black cells, and drawing line segments in places where there is only one way for the loop to pass through!

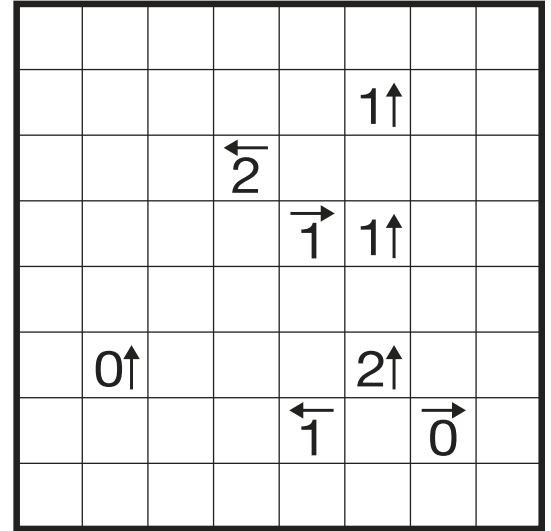
Starting puzzle



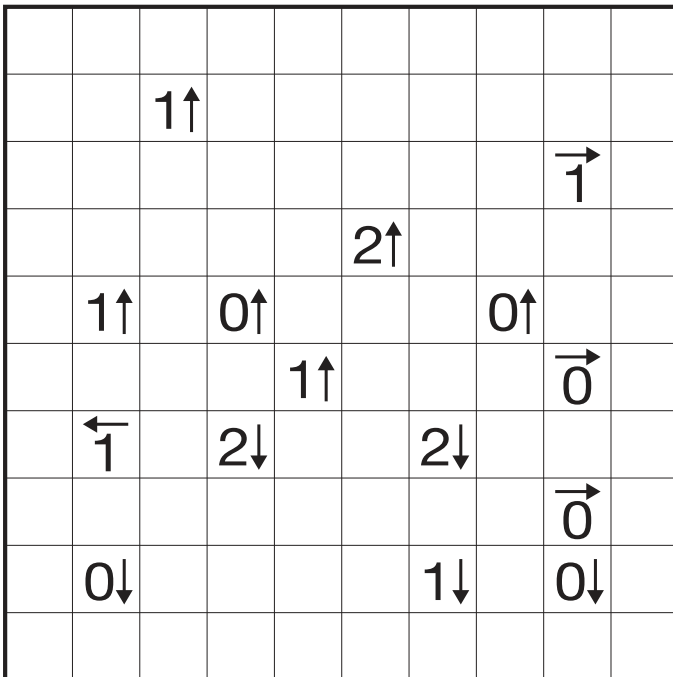
Complete



### #1



### #2



### #3

